



Enriching Lives

# KIRLOSKAR FIRE FIGHTING PUMPS AND PACKAGES



PUMPS CONFORMING TO

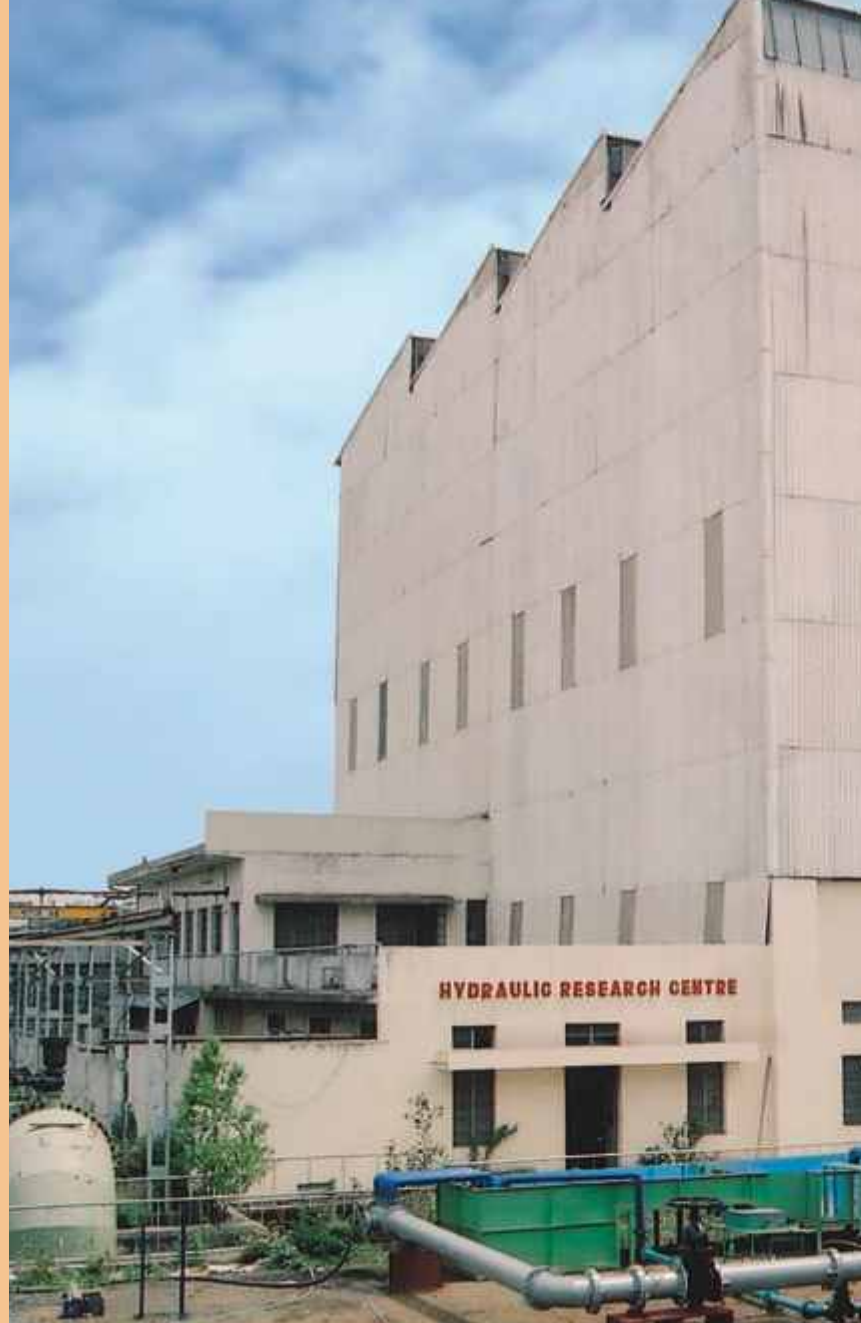


KIRLOSKAR BROTHERS LIMITED

**Kirloskar Brothers Limited, (KBL)** the largest manufacturer and exporter of pumps in India is one of the leading solution providers in the field of fluid handling in the world. The core competency lies in designing comprehensive solutions for complex fluid handling problems. The captive foundry for producing special alloys for pump components for varied application, facilities for precision machining and computerized testing and long term partnerships with vendors add strength to KBL's extensive infrastructure.

KBL has been supplying Fire Protection Pumps and Packages for many decades. The most important aspect of its fire protection package is the reliability of the fire pumping system to ensure adequate water supply at required pressure at emergency conditions.

The company has also a team of competent engineers who are equipped to render not only appropriate fluid handling solutions for fire fighting purposes but also meet the challenges normally faced by fire protection professionals by fostering a strong working relationship with business partners in the fire protection system business chain.



#### USER'S LIST

- Petroleum, Oil and Gas
- Indian Oil Corporation - refineries, various depots / terminals and installations all over India.
- Bharat Petroleum Corporation - refineries, various depots / terminals and installations all over India.
- Hindustan Petroleum Corporation - refineries, various depots / terminals and installations all over India.
- Oil and Natural Gas Commission - various offshore installations.
- Reliance Industries Limited, India.
- Chennai Petroleum Corporation Limited.
- Gas Authority of India Limited.
- Port Trust of India - Ports at Vizag, Kandla, Mumbai, Cochin, etc.
- Hotels, shopping and housing complexes all over the country
- Delhi Metro Rail Corporation
- Intel Corporation - Bangalore





*KBL's hydraulic research centre is one of the largest in Asia, where our engineers are constantly carrying out research on characteristics of pump operation for updating our products to satisfy the fast changing needs of our customers. For industrial and other type of installations, we recommend solutions involving fire protection packages to provide security from risk due to fire. We design and provide fire pump packages as per the specifications of TAC, NFPA-20, FM and UL.*

*Our engineers are also well versed in numerous international fire protection codes and standards. They are working in association with many development organizations, which help us to improve fire protection systems for global need.*

*Our wide range of compact and cost effective products are an integral part of our solutions and are backed by world-wide sales and service network. Another reason for our success is that we provide our customer, the world class pumping system as a single source of responsibility while partnering with world class manufacturers for associate products such as electric motors, diesel engines, pump controllers etc..*

# FM APPROVED AND UL LISTED PUMPSETS

One of the major concerns for Insurance companies and end users is the reliability of the fire protection system. Working closely with the contractors, consultants and the end customers for years, Kirloskar Brothers Ltd. understand their need for cost effective and reliable pumping packages for fire protection. KBL Pumps and associated equipments such as diesel engines, motors and controllers are manufactured meeting the various local and international regulations / standards.

KBL offers a wide range of fire pump packages for a variety of installations at

- Commercial complexes
- High rise buildings
- Airports and ports
- Oil and Gas on shore and off shore platforms
- Petroleum and Petrochemical complexes
- Power stations and transformer stations
- Warehouses
- Manufacturing and Chemical industry



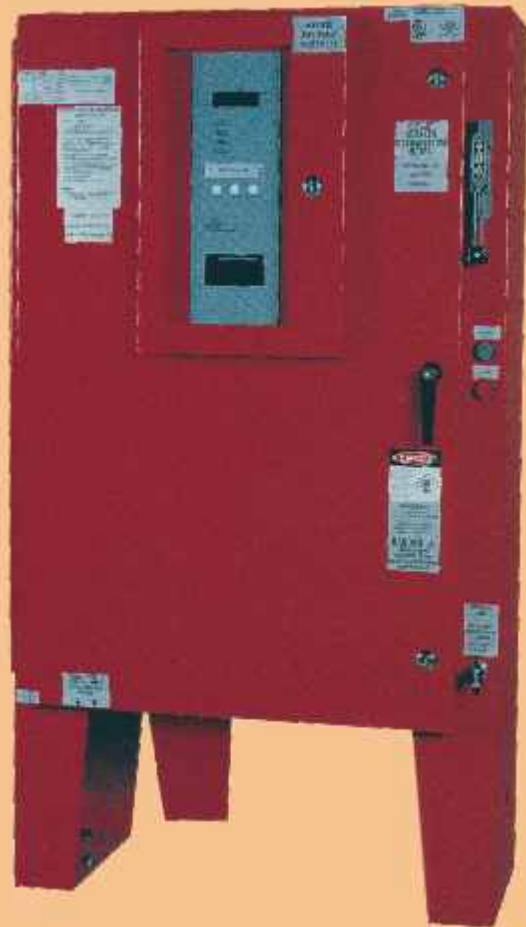
**Diesel engine driven fire pumpset with controller**

## Controllers

To ensure that the package meets the quality norms of the NFPA and FM/UL Standards and to have total compatibility controllers are sourced from experienced and reliable manufacturers who follow similar specifications and processes.

Controllers for electrical motor driven fire pumps are available for various methods of starting. These include Direct on line, Star-delta, Auto-transformer, Soft start etc.. Packaged Diesel Engine driven pumpsets incorporate 12V or 24V DC controller.

Controllers can be supplied free standing or mounted on the base plate, completely wired and connected to the pump package.



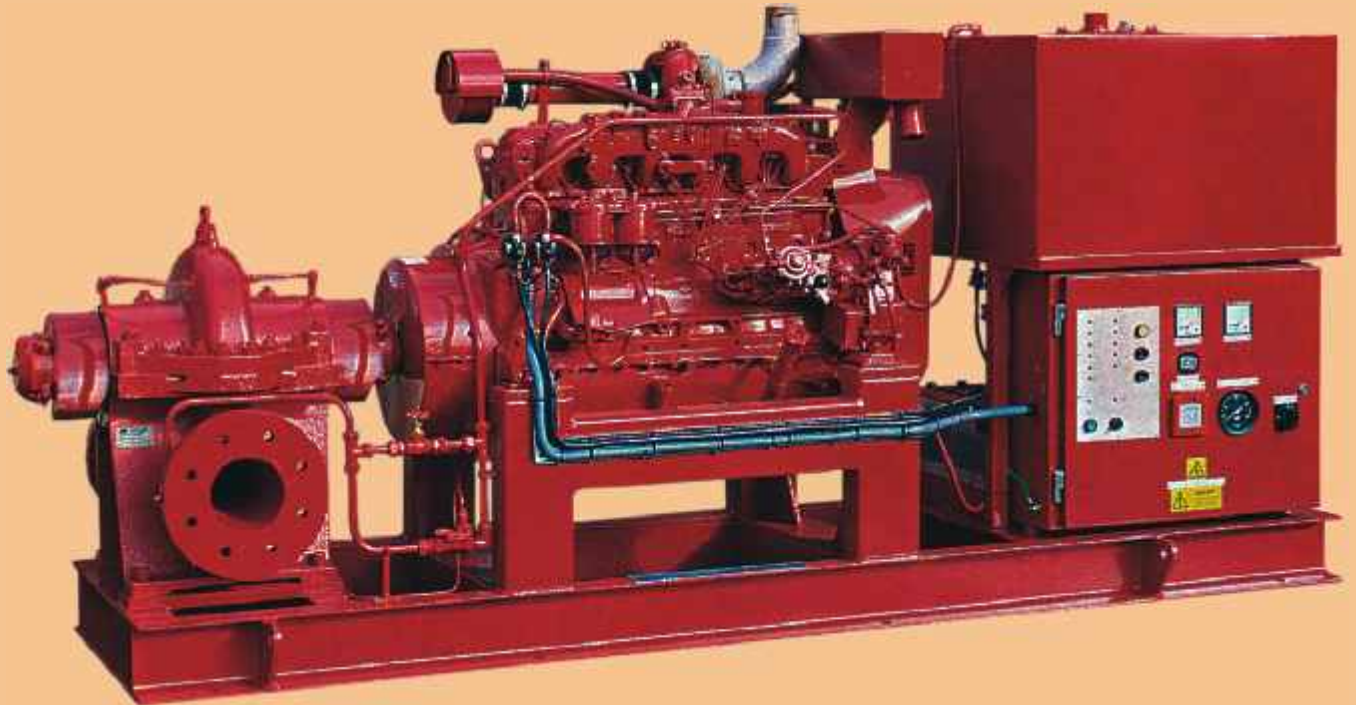
**Pump controller**

## NFPA 20 FIRE PUMPSETS

Most of the countries stipulate that the fire pumps meet the standards issued by the National Fire Protection Association – USA. KBL designs the fire pumpsets as per NFPA –20 specifications to meet the stringent fire safety norms and at the same time ensuring cost effective solutions.

Apart from NFPA many valued customers require that pumps and controllers are also approved and listed by world renowned fire certifying agencies such as Factory Mutual (FM) or Underwriters Laboratories (UL). Our pumping systems are manufactured and exclusively tested in compliance with stringent approval standards set by these agencies.

# FM APPROVED AND UL LISTED PUMPSETS



KBL is having a wide range of pumps, 'FR' and 'MSF' series developed exclusively for fire-fighting applications. 'FR' series are FM approved and UL listed. MSF is UL listed.

## Highlights of KBL Fire Pump Packages

- Diesel engine driven pumpset
- Main fire pump - FM approved / UL listed
- Diesel engine - FM approved / UL listed heat exchanger cooled
- Engine controller - FM approved / UL listed
- Drive shaft
- Secondary water-cooling loop

All above equipments are mounted on a common skid.

A Jockey pump with controller is mounted on a separate skid where controller is FM approved or UL listed



**Electric Motor Driven Pumpset**

Main fire pump package motor driven set consists of following

- Main fire pump - FM approved or UL listed
- Motor - As per NFPA 20/ UL listed
- Motor controller - FM approved or UL listed

All above equipments are mounted on common skid

**Jockey Pump with Controller**

It consists of compact inline vertical jockey pump with controller mounted on a common skid or a separate skid, where controller is FM approved or UL listed.

- Delivery Size upto : 100mm
- Capacity : 75 m<sup>3</sup>/hr
- Head upto : 220 m

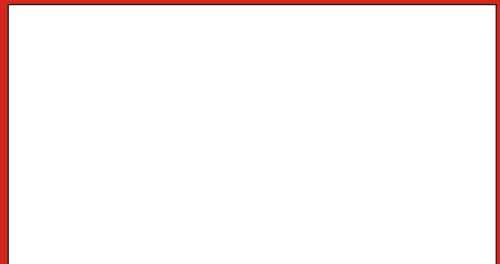


**Main Fire Pumps**

FM or UL Fire pumps KBL range for Split case pumps			UL Listed Fire pumps KBL range for Split case pumps		
Flow US gpm	Rated net pressure in PSI	Speed RPM	Flow US gpm	Rated net pressure in PSI	Speed RPM
200	96---210	From 1760 to 3550 rpm	150	74---100	1760 & 1800 rpm
250	94---209		200	72---104	
300	93---207		250	70---102	
400	87---205		300	75---102	
500	80---268		400	70---101	
750	62---264		450	67---99	
1000	74---251		500	72---104	
1250	70---246		750	76---113	
1500	64---243		1000	74---160	
2000	84---210		1250	71---159	
2500	95---188		1500	71---163	
Two Stage Split case pumps			2000	70---161	
750	276---370	1760 to 2950	2500	72---158	
1000	155---361		3000	73---105	
1250	170---348				



Enriching Lives



Enquiries may be directed to the nearest Sales Office.

India: Ahmedabad, Bangalore, Baroda, Bhubaneswar, Kolkata, Chennai, Jaipur, Kochi, Lucknow, Mumbai, Nagpur, New Delhi, Pune, Ranchi, Secunderabad.

Overseas: Ajman, Cairo, Frankfurt, Johannesburg, Nairobi, Phnom Penh, UAE, Vientiane

KIRLOSKAR BROTHERS LIMITED  
STUDIO MARS PVT. LTD