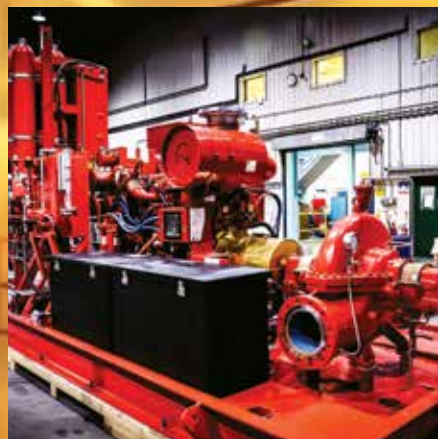




UL LISTED & FM APPROVED FIRE PUMPS AND SYSTEMS

FOR WHERE IT REALLY MATTERS



MULTI-STAGE MULTI-OUTLET PUMPS

SyncroFlo Inc. is the first company to offer FM Approved multi-stage multi-outlet (MSMO) pumps. Using multiple impellers to generate more head than a single impeller, MSMO pumps are used in fire protection systems in most tall buildings including offices, hospitals and hotels.

MSMO pumps offer many benefits: buildings need fewer pumps; pipework and valves are reduced; the need for water storage tanks on intermediate floors is eliminated; and the loading on the building is reduced. The cost and space saving implications are significant: power requirements are lower, pump rooms can be smaller and, in line with new EU legislation, there is no need to use pressure reducing valves to prevent over-pressurisation of sprinkler heads.

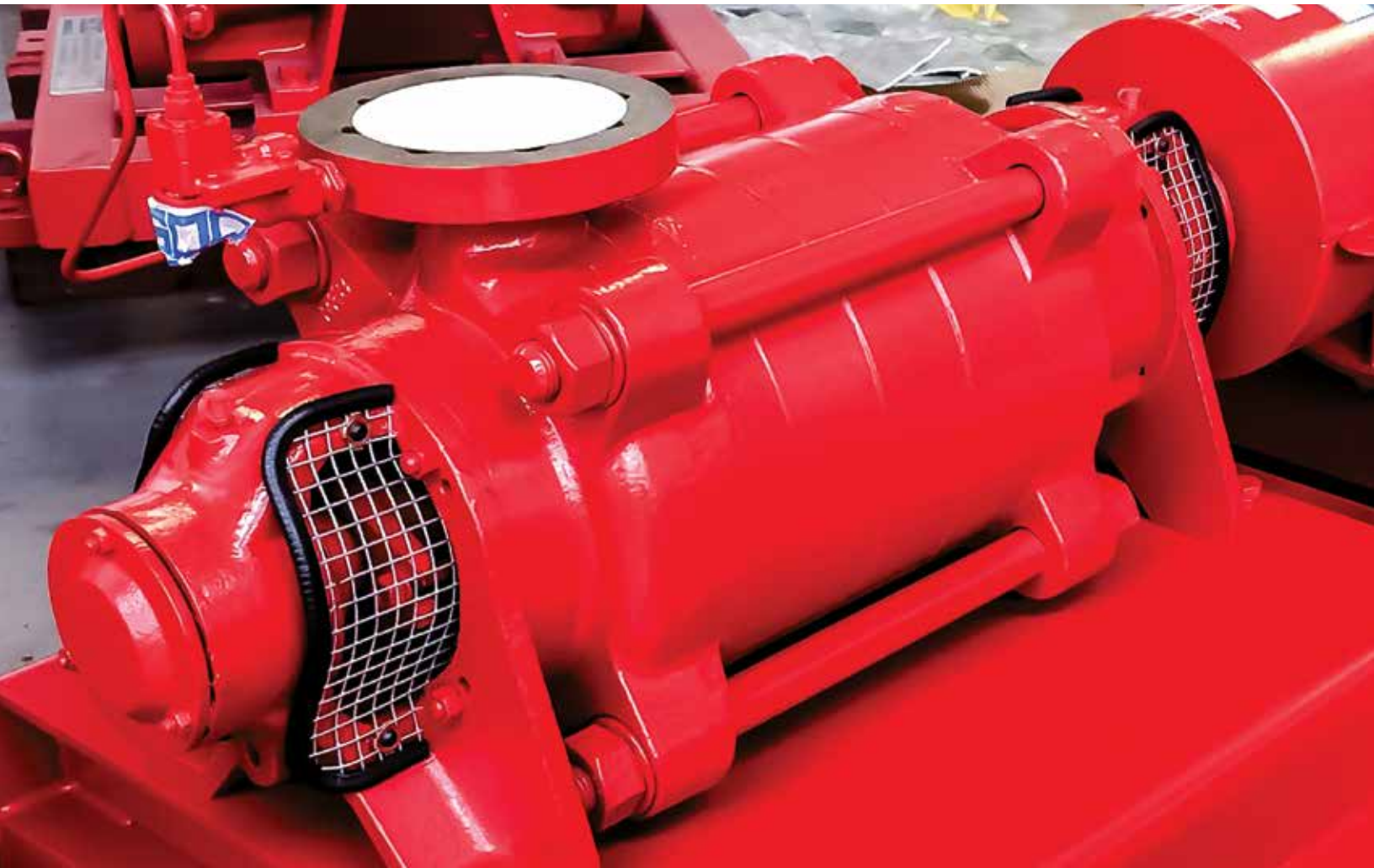
Driven by electric motors or diesel engines, SyncroFlo MSMO pumps are available to satisfy any LPCB specification for automatic sprinkler protection in high rise and multiple storey buildings.

TYPICAL INSTALLATIONS:

- Offices
- Hotels
- Residential Buildings
- Tunnels
- Mixed Use Buildings

TYPICAL APPLICATIONS:

- Sprinkler systems
- Hydrant systems
- Deluge systems
- Monitor systems
- Water curtains





END SUCTION PUMPS

The protection of life is not a matter for compromise. This is particularly true for fire protection systems where they are only as strong as their 'weakest link' and compromise may result in avoidable loss of life or property.

That is why SyncroFlo fire pumps are designed specifically for the very particular needs of fire protection and are approved by most of the major fire protection bodies around the world. By selecting an approved SyncroFlo fire pump as part of an approved system and maintained in accordance with standards such as NFPA 20, you can sleep easy knowing that you have chosen the best you can get.

SyncroFlo Pumps have been manufacturing fire pumps for over 135 years and with one of the widest range of approvals of any manufacturer in the world. Experience gained from extreme environments such as offshore oil & gas installations has led to the creation of the

SyncroFlo FM/UL Unistream and Eurostream range of pumps approved for fire protection by FM Approvals and Underwriter Laboratories and fully compliant to NFPA 20.

SyncroFlo End-Suction fire pumps are available for duties ranging from 200 USgpm to 1500 USgpm and are suitable for electric or diesel drives.

TYPICAL INSTALLATIONS:

- Supermarkets
- Hospitals
- Schools and Colleges
- Hotels
- Office Buildings

TYPICAL APPLICATIONS:

- Sprinkler systems
- Hydrant systems
- Monitor systems
- Water curtains

SPLIT CASE PUMPS

FM/UL Thrustream Split Case Fire Pumps have been manufacturing fire pumps for over 135 years with one of the widest range of approvals of any manufacturer in the world.

Experience gained from extreme environments such as offshore oil & gas installations has led to the creation of the SyncroFlo FM/UL Thrustream range of fire pumps approved for fire protection by FM Approvals and Underwriter Laboratories.

SyncroFlo Thrustream FM/UL Approved Fire Pumps are available for duties ranging from 200 USgpm to 5000 USgpm and are suitable for electric or diesel drives. SyncroFlo also supplies Vertical, End-Suction and In-line pumps. SyncroFlo Thrustream FM/UL Approved Fire Pumps are available with either inch or metric fittings.

TYPICAL INSTALLATIONS:

- Office buildings
- Hospitals
- Airports
- Manufacturing facilities
- Power stations
- Pharmaceutical facilities
- Schools/College

TYPICAL APPLICATIONS:

- Sprinkler systems
- Hydrant systems
- Deluge systems
- Monitor systems
- Water curtain





VERTICAL TURBINES

Experience gained from extreme environments such as off-shore oil & gas installations has led to the creation of the SyncroFlo FM/UL Vertical Turbine range of fire pumps approved for fire protection by FM Approvals and Underwriter Laboratories and fully compliant to NFPA 20.

Where the fire protection water source is located below ground or deck level, the best technical pumping solution is the vertical suspended multi stage turbine pump. With this type of unit the impellers are fully immersed in the water maintaining prime at all times. The pumps are driven by vertical electric motors or by diesel engines through a right angle gearbox.

SyncroFlo Vertical Turbine pumps can also be custom engineered for the oil and gas industry and can handle fresh water or sea water for cooling purposes, fire protection duties, general water supply,

washdown or drill water. They can also be used for handling crude oil or controlling spillages. For platform or jetty locations they can be provided with a below-deck discharge if required.

TYPICAL INSTALLATIONS:

- Office Buildings
- Hospitals
- Airports
- Manufacturing Facilities
- Power Stations
- Pharmaceutical Facilities

TYPICAL APPLICATIONS:

- Sprinkler Systems
- Hydrant Systems
- Deluge Systems
- Monitor Systems
- Water Curtain

VERTICAL IN-LINE PUMPS

The SyncroFlo line of vertical In-Line fire pumps are lightweight and compact for smaller pump rooms. They eliminate the need for coupling alignment and there are fewer lost or misplaced parts.

SyncroFlo Vertical In-Line Pumps are available for duties up to 1500 USgpm and are suitable for electric drives only. SyncroFlo Vertical In-Line pumps can also be offered as pre-wired packages that include a limited or full service controller. Every package is mounted on a steel fabricated base with the motor wired to the controller. The automatic air relief valve, casing relief valve, suction gauge and discharge gauge are mounted on their respective spool pieces. Additional piping, valves and sensing lines are available with the In-Line packages. The SyncroFlo In-Line package system also includes a jockey pump and jockey pump controller.

TYPICAL INSTALLATIONS:

- Office buildings
- Hospitals
- Airports
- Manufacturing facilities
- Power stations
- Pharmaceutical facilities

TYPICAL APPLICATIONS:

- Sprinkler systems
- Hydrant systems
- Deluge systems
- Monitor systems
- Water curtain





PACKAGED FIRE PUMPS

SyncroFlo packaged fire pumping systems save time, labor and change orders on site. Cost-effective, completely self-contained skidded or housed units precisely fit specified areas, and require only system piping connections and a single point electrical hook-up.

Housings are built to accommodate required environments with lighting, heating, ventilation, insulation, weather protection, alarms and easy access opening.

Before shipment, each pump station must pass SyncroFlo's unique system testing and quality control standards. After installation, users are supported by a network of factory trained service representatives qualified to provide on-site system service and user training. All SyncroFlo packages meet OSHA and Federal Regulation 29 CFR 1910.399 and NFPA Pamphlet 70 National Election Code (NEC) for

third party certification. Excellent design, quality construction and knowledgeable personnel provide the reliability required for a SyncroFlo Fire Protection System. SyncroFlo is ISO 9001 certified and our test rig is UL Listed and FM approved

SyncroFlo can design your fire pump solution with electric or diesel drivers. We offer inline, end suction, horizontal split case, or vertical turbine pumps to meet site or flow requirements.

DETAILED SPECIFICATIONS:

- Built in accordance with NFPA Pamphlet 20
- Fully Prefabricated
- Internally piped and wired
- Factory Installed Tamper Switches
- Factory Tested
- Single Source Responsibility
- Automatic or Manual Operation



2905 Pacific Drive
 Norcross, GA 30071
 Tel: (770) 447-4443
 www.syncroflo.com

TOTAL COMMITMENT

Since 1962, our commitment to excellence has enabled SyncroFlo to become the world's leading manufacturer of pumping stations. The SyncroFlo name has become synonymous with quality-built, cost-effective pumping systems. We pioneered pre-assembled pumping systems decades ago. Today, our installed base includes some of the largest pumping systems ever built.

